



Product Catalogue

2024/2025



Re-imagine the way you work

Contents

About us	4
Our team	5
1 Orthopaedics	6
X-ray	7
Ultrasound	10
Emergency & care	14
2 Dental	16
3 Gynaecology	20
4 Generator solutions	22
Generator stands	23
Generator remote control	25
5 Flat panel solutions	26
Protection covers	27
Flatpanel remote handling	30
6 Markers	34
7 Image improvement	36
8 Protection & safety	40
Aprons	41
Apron & gloves rack	47
Shields	49
Signs	51
9 Transport & storage	48
SCANdroid	49
Carts	50
Mobile workstation	53
10 Farriery	58



podoblockusa.com/shop



SCAN ME

About us

Who we are

Podoblock is the global leader in accessories and tools for the imaging market. We re-imagine and reinvent the way imaging professionals in the veterinarian world make X-rays and ultrasounds by using our durable, safe and ergonomic products. We believe that safety for imaging professionals is crucial when exposed to hazardous environments, and efficiency is necessary for a fast-paced profession. The solutions we innovate help practitioners stay safe and efficient with enhanced mobility. We design, build and test each piece of equipment to ensure our quality and your safety. **Re-imagine the way you work.**

Our history

Podoblock has always set the bar for high quality solutions by constantly innovating to improve our customers' efficiency and safety. With nearly three decades of extensive professional experience in the equine market, coupled with over 15 years of veterinary medical expertise, we deeply prioritize our esteemed clientele and strive to provide unparalleled value. Our unwavering commitment lies in harnessing our proficiency to develop cutting-edge solutions utilizing our exceptional range of products.

Innovative solutions today

As technology continues to evolve, we make it our priority to invest our time into developing products that go above and beyond the industry standard and utilize innovative hardware.

Made in Holland

All products are made in the Netherlands, and we choose only the highest quality material.

Deliverability

We offer worldwide delivery through our offices located in the Netherlands and in the United States.

Service and repairs

Our products are made of the highest quality materials, and we provide both in-house and online customer service to ensure product satisfaction.



Our team



Claudia Lucker
PODOBLOCK USA MANAGING DIRECTOR
claudia.lucker@podoblockusa.com
+1 561 815 2265



Quincy Jacobs
SALES MANAGER
quincy.jacobs@podoblockusa.com
+1 561 398 3664



Alex Berends
CO-FOUNDER & CEO
ceo@podoblock.com
+31 50 82 00 052



Kees Laninga
PURCHASE & LOGISTICS
logistics@podoblock.com
+31 50 82 00 053



Wim Bentum
WAREHOUSING
+31 50 82 00 057



Leonie Veenstra
MARKETING MANAGER
marketing@podoblock.com
+31 50 82 00 057



Tiemen Hovius
FINANCIAL MANAGER
finance@podoblock.com
+31 50 82 00 054



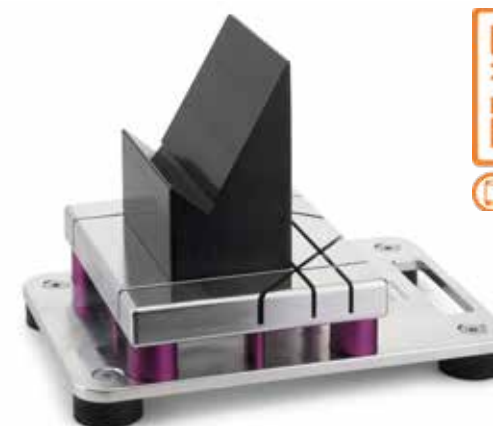
René van Wijk
INSIDE SALES & BACKOFFICE
sales@podoblock.com
+31 50 82 00 056



1 | Orthopaedics

At Podoblock, we recognize the challenges that equine veterinarians face daily. From the onset of our business in 2008, we have been aware of the difficulties that come with equine X-raying and ultrasound. Our very first invention, the Podoblock, has been a whopping success ever since.

It always guarantees the same angle in every position, and it maximally minimizes radiation because of the hands-free system. From there we developed a whole range of robust, solid and almost indestructible products which help you work safe and efficiently.



Podoblock

- Made of aluminium base and a synthetic PE500 top piece
- Weight Podoblock: 14.3 lbs
- 4 rubber feet
- Includes 1 Topblock of your choice
- LM / AP / 45° Hands-free system
- Avoids fingers on your X-ray
- Height from ground to tip-off hoof in Podoblock is either 3.54" (90 mm), 4.72" (120 mm) or 6.69" (170 mm)



Topblock + optional wedge

Easily interchangeable radiolucent blocks for our Podoblock with an angle diversity of 45° to 60° with 5° increments.

- Made of synthetic PE500
- Available in black only



Topblock 45° Topblock 50° Topblock 55° Topblock 60° Topblock 60° Upright Pedal



Topblock Flatplate LM / AP / 45°

For LM / AP / 45° takes with the foot standing flat or upright pedal.

- Anti-slip surface
- Made of synthetic PE500
- Available in black only





Design:
Dr. Joachim Onderka



MagRayCloxx

Magnetic X-ray block that greatly enhances both your and the horse's mobility and working speed. The blocks stay on the horse while making oblique X-rays.

The block has a clean break-over and a cut lateral and medial edge.

The cloxx can be used with or without (radiolucent) foil that is wrapped around the horse's shoe for safe fixation, and even works on a barefoot horse.

- Made of synthetic PE500
- Size: L 6.1" x W 6.3" x H 2.4"
- Clean break-over on both front and side
- Magnets to fix to the horseshoe
- Bottom of Cloxx padded with anti-slip rubber strips
- Comes with radiolucent foil for extra fixation



SCANDroid

The ideal, height-adjustable scan stool for the mobile veterinarian to transport to the job site or for clinic use. The SCANDroid has excellent stability with a total of 5 castor wheels, 2 of which with a locking device.

- Transport: Ø 15.7" x 9" height / 20.5 lbs weight
- Maximum weight bearing gas spring is 242 lbs

Extension pipes

The gas spring allows for a stageless height-adjustment and can be upgraded with an optional Extension pipe.



Storage gas spring
& extensions



Extension Short & Long



Lowest working height



Gas spring only



+ Extension Short



+ Extension Long

Cover Plate

Upgrade your SCANDroid bottom tray with a Coverplate to protect the bottom of the SCANDroid from dust and dirt. The Coverplate can be customised with your own logo.





Cooperflex

A light-weight, sturdy and highly mobile hoof support with a pivot that allows you to change the angle of the foot pedal.

Comes with an extension-pipe that gives you more working-height.

- Material Base plate: High-density Polyethylene
- Material Foot stand: Aluminium
- Weight: 10 lbs
- Diameter Base: Ø 15.7"
- Low - High position: 7.9" - 15.8"
- Extension pipe also serves as a carrying device



SCAN Wedge

Straight-forward wedge for extra extension to be placed under the hoof when conducting hyperextension-test of the coffin joint.

- Material : Rubber 95° Shore
- Dimensions: L 7.1" x W 5.9" x H 2.6"-0
- Angle: 20°



U-scan

Our own standoff, adaptable for a wide range of linear-array transducers.

- Thickness sides: 0.3"
- Thickness bottom: 0.5"
- Comes in a protective box

Note:

We supply all available kinds of standoff on request.



Flabbus Ultrasound Standoff

The Flabbus Ultrasound Standoff is an exceptionally elastic item, conforming to patient contours while maintaining uniform thickness and universal application to each type of Probe head.

Flabbus Ultrasound Standoff is made of a proprietary synthetic gel, resulting in a moulded material that does not suffer inelastic strain from everyday stresses.

Consequently, the Flabbus Ultrasound Standoff does not have to be bagged or wrapped in plastic film to maintain its shape and can be easily stored.

For optimal use, the user can cut it to his/her preferred size-of-use with the supplied scissors. For example, the 11.8" x 11.8" Flabbus can be cut into six smaller parts of 3.9" x 5.9".

Any other size is a possibility, depending on personal choice.

- Size: 11.8" x 11.8"
- Thickness: 0.12" (3 mm) or 0.2" (5 mm)



Hoofplaster

For shadow-free hoof recordings.



Corrective Foal Boot

The Corrective Foal Boot is designed to be used in all fetlocks for:

- Correction of Flexural Limb Deformities or contracted tendons
- Correction of Angular Limb Deformities or toe-in / toe-out conditions
- Prevention of acquired retraction due to pain-post-injury
- Permanent or temporary immobilization of the distal limb (for better management of fractures, tendon or ligament injuries and wounds)

The Corrective Foal Boot comes in one-size-fits-all.



Emergency Compression Boot

The Emergency Compression Boot can be used for:

- Immobilization of distal limbs
- Emergency breakdown stabilization
- Condylar, sesamoid or P1, P2 and P3 fractures (where normal alignment is required)
- Wound management (where immobilization is required)

The Emergency Compression Boot comes in 2 sizes: Regular and Large.



Articulated Corrective Brace

The Articulated Corrective Brace can be used in the full front limbs for:

- Correction of Flexural Limb Deformities or contracted tendons
- Correction of Angular Limb Deformities or Carpus Varus/Valgus
- Prevention of acquired full limb retractions (due to pain)
- Permanent or temporary immobilization of the full limb

This model also comes in two sizes: Regular and Large.





2 | Dental

The demand for Dental X-Ray solutions has grown drastically over the last 10 years and our company has been continuously developing new and innovative products to lead the way with practical solutions. These products allow for a seamless operative process in the world of equine dentistry.



Note:

When ordering the optional CR-Cassette or DR-Flat panel solutions, be sure to state the required cassette measurements you use.

Denfinity

This lightweight, portable and collapsible stainless steel stand offers you the freedom to make high-quality Skull X-rays in a hands-free fashion. The Denfinity stand is a fully stainless steel base plate and vertical telescopic pole that guarantees a secure positioning and correct height adjustment.

Configuration and Combination Possibilities

The Base

You can configure the base plate and pole with several options that can quickly and directly be placed on the Denfinity base.

The 3D-Joint

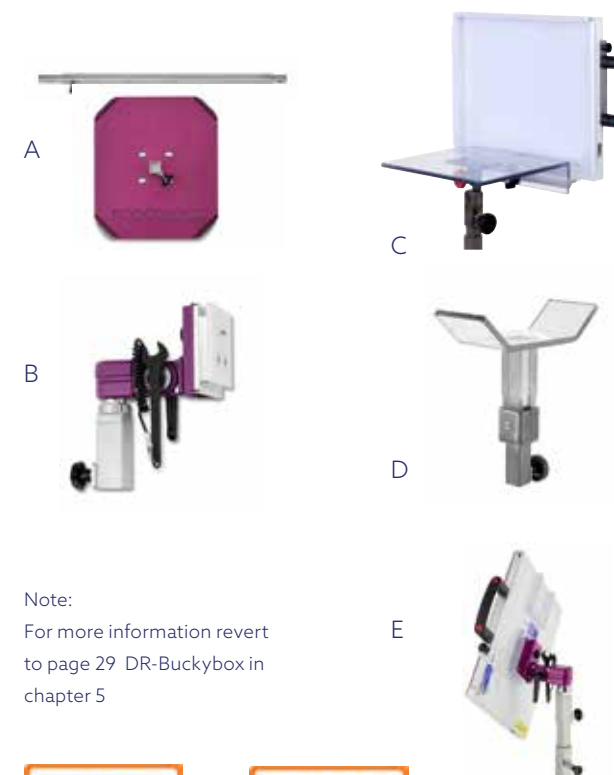
The aluminium 3D-joint is a rotating head joint that securely attaches our DR-Quadro, DR-Buckybox and DR-Cowboybox.

The LM-Head Support

In combination with our Protectionbox, Podo-Protectionbox, DR-Quadro, DR-Buckybox and DR-Cowboybox and fixates your CR-Cassette or DR-Flatpanel for best usage.

The DR-Buckybox

Secures your Cassette or Digital Flat Panel when used in combination with the 3D-joint and LM-Head support.



Note:

For more information revert to page 29 DR-Buckybox in chapter 5

Denfinity Options

A. Base Element

Base plate: 14" x 16" x 3.5"
Vertical pole: 38"
Vertical travel: 24"
Material: Stainless steel

B. 3D-joint

Aluminium 3D-swivel joint used in combination with DR-Quadro, DR-Buckybox or DR-Cowboybox.

C. LM-Head support

Polycarbonate 0.4"
Swivel range: 180° Universal adapter for fixation of all CR-Cassette & DR-Flat Panel Solutions

D. Headrest

Polycarbonate 0.4"
Full radiolucent, no metal parts in the detection area

E. DR-Buckybox

Material: Polycarbonate 0.12"
Fully closed cassette which requires 3D-joint to function
Note: DR-Cowboybox and DR-Quadro are also compatible with the Denfinity



Denfinity



DR-Buckybox

XtandR

The XtandR is a revolutionary set of interchangeable radiolucent bite plates for equine head radiographs. The XtandR is only intended for taking X-rays of the incisors.

They are entirely universal to fit all speculi available in the market.

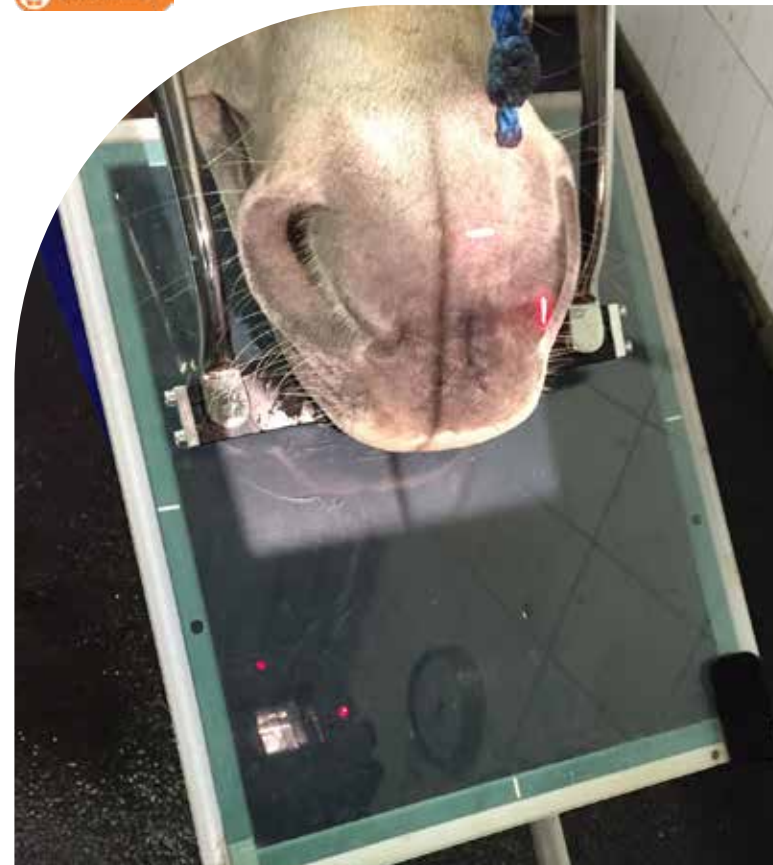
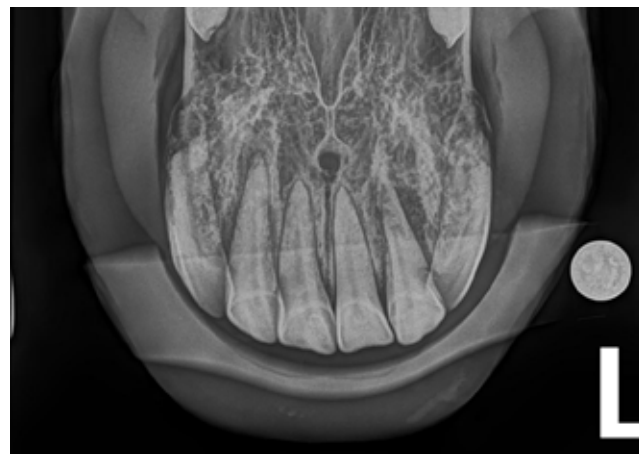
According to the official DAkKS-DKD-R 3-3 regulation, these radiolucent bite plates have been tested and can withstand a pressure of 5,13 kN / 1131 lbs

- Material: HMPE1000
- Can withstand a pressure of 5,13 kN / 1131 lbs



SCAN FOR PRICES

Radiolucent bite plates sample X-ray



The Juliuster

Designed, tested and approved in collaboration with the European Equine Dental Consultancy.

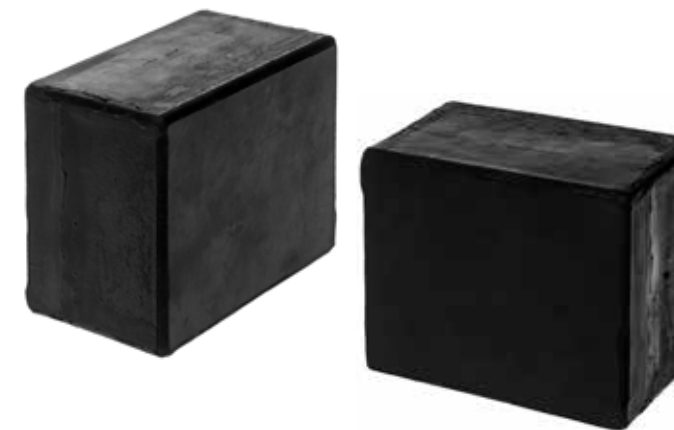
Easy-to-use device to offset the lower jaw to the left or right for open-mouth views with offset-technique.

Great to investigate the roots and the occlusion surface of the cheek teeth. Dorso-ventral views can be made with a 5 cm offset to the left and right.

- Material: HMPE500
- Offset: 0.2" left/right
- Adjusted in 0.5" increments
- Strap: 58" BioThane



SCAN FOR PRICES



Dental X-Block

Can be used directly between the incisors to quickly create 2.4, 3.2" or 4.0" space.

- Material: Rubber 95° shore
- Weight: 1.4 lbs
- Size: 2.4" x 3.2" x 4.0"



SCAN FOR PRICES



3 | Gynaecology

Consistent results, simpler, safer and with a focus on the well-being of the horse. In gynaecology, we have developed an innovation in collaboration with Utrecht University and Seldsum EQ Hendriks. Just to make the work of veterinarians a little easier.



OPU ProbeHolder

Our new ovum pick-up (OPU) probe holder is the ideal device for ovum ultrasound and is compatible with most ultrasound brands on the market.

With the ProbeHolder, you have an innovation that makes equine OPU ultrasound processes simpler, faster and more comfortable for both vet and horse.

The unique construction, material and size of this innovative product are the attributes that make it valuable. It comes equipped with an integrated needle chamber which can be (optional) supplied with a stainless steel needle guide.

Placing your Ultrasound probe is quick and easy and requires only one locking screw through the handle with integrated magnets secure it all.



ProbeHolder:

- Material: HMPE – Blue
- Dimensions: L 20.5" x W 2.4" x H 7.1" (including the removable handgrip)
- One (red) locking screw
- Two integrated magnets for quick locking
- No additional tools required
- The removable handgrip can be placed on three sides
- Transport case included



Needle guide:

- Material: stainless steel
- Dimensions: 21.1" total length
- Outer diameter 0.2"
- Inner diameter 0.13"
- Fits perfectly in the Probeholder
- No additional tools required
- Trumpet piece for easy and safe access with the needle



SCAN ME

Prices | and info

Each product has its own QR code. Scan the code with your mobile's phone camera and always get up-to-date prices and information.



4 | Generator solutions

With our product line of generator gears, you will have no trouble finding a solution that will fit your daily needs and demands. Our Stat-X, jiXtr or X-ray switches will be a real asset to your equine practice, thanks to the all-purpose character of our tools. We can offer standard solutions for every mobile generator. Concerning your safety, ease-of-use, quality and convenience, you, your staff and your horses will be in good hands with Podoblock equipment.



Stat-X Espléndido

Weight portable X-ray source: 13.2 - 31 lbs

- Swing arm length: 29.5"
- Vertical travel arm: 27.5"
- Vertical travel stand: 16.1"
- Max height bracket: 76.8"
- Transport size: L 48 x W 11.8 x H 12.6"
- Weight: 48.5 lbs

Weight portable X-ray source: 31.1 - 50.7 lbs

- Swing arm length: 22.8"
- Vertical travel arm: 19.7"
- Vertical travel stand: 27.6"
- Max height bracket: 86.6"
- Transport size: L 54 x W 11.8 x H 12.6"
- Weight: 55 lbs
- Color: PMS260C Satin



Stat-X Vaquero

Weight portable X-ray source: 13.2 - 35.4 lbs

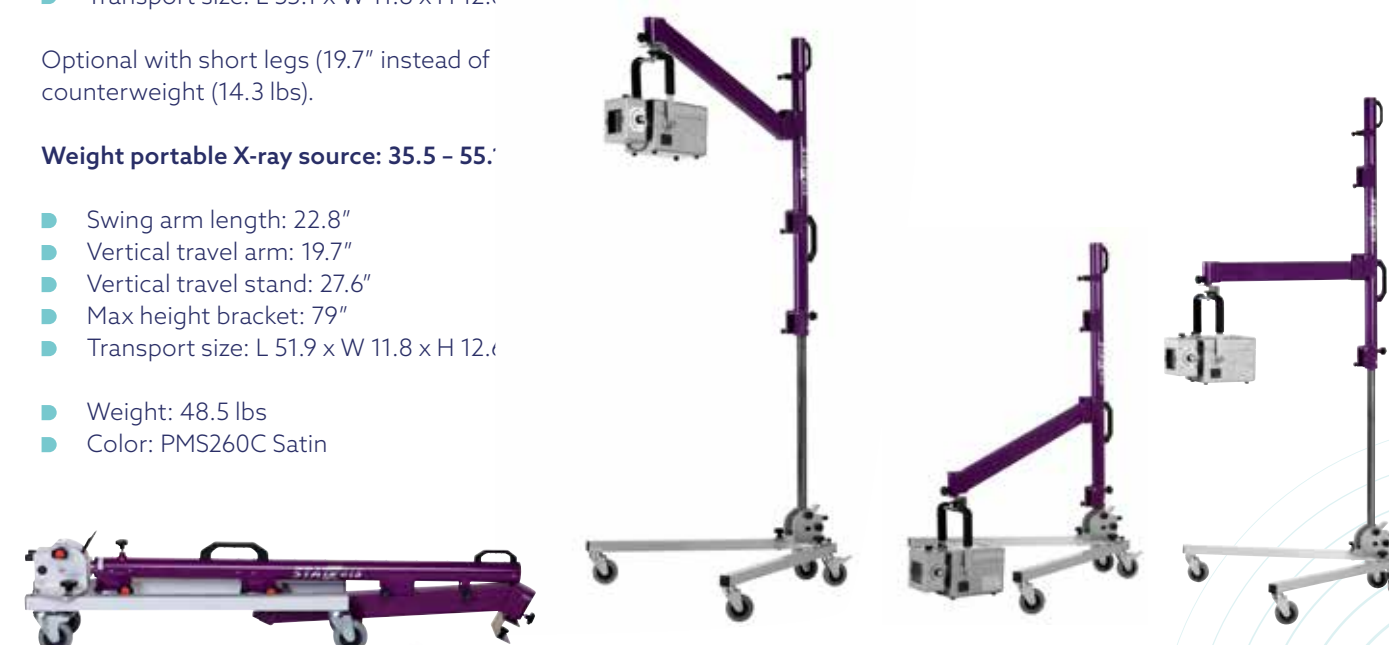
- Swing arm length: 29.5"
- Vertical travel arm: 27.5"
- Vertical travel stand: 27.6"
- Max height bracket: 81.1"
- Transport size: L 55.1 x W 11.8 x H 12.6"

Optional with short legs (19.7" instead of counterweight (14.3 lbs)).

Weight portable X-ray source: 35.5 - 55.1 lbs

- Swing arm length: 22.8"
- Vertical travel arm: 19.7"
- Vertical travel stand: 27.6"
- Max height bracket: 79"
- Transport size: L 51.9 x W 11.8 x H 12.6"

- Weight: 48.5 lbs
- Color: PMS260C Satin



jiXtr

With the jiXtr your X-ray source becomes an easy-to-handle, versatile and highly portable instrument that will cover every angle, spot or height you desire, while working quickly and safely and sparing your back in the process.

The jiXtr can be adjusted without pre-defined increments and has a variable height-adjustment. It is compatible with all X-ray devices on the market, with a maximum of 15 kg.

The rotation of the source in combination with the unlimited tilt of the jiXtr secures an accurate position for Skyline views.

- Material: Light-weight aluminium
- Transport size: L 5" x W 4" x H 33"
- Low position: L 11" x W 11" x H 31"
- High position: L 11" x W 11" x H 79"
- Stroke range: 63"
- Weight: 10 lbs
- 'Fix-and-release' system



Swingarm Options

Loose Swingarm to upgrade or expand your Stat-X stand to the next level.

- The Bucky Swingarm has a weight-bearing capacity from 8.8 up to 33.0 lbs
- The Vaquero Swingarm has a capacity from 13.2 up to 55.1 lbs
- The Espléndido Swingarm has a capacity from 13.2 up to 50.7 lbs

For added usability and compatibility, there is a slide & lock adapter at the top of the Bucky Swingarm for connecting to the integrated 3D adjustable joint to our (optional) DR-Buckybox or DR-Cowboybox. See page 29.



Generator remote control

TruXRAY™ Switch

Easy prep-and-expose switch for any portable X-ray source available on the market.

- Plug-and-play device
- Comes with adapter for your source
- Color: black

Note:
Please measure the width of your generator grip and quote your generator brand when ordering





5 | Flat panel solutions

The use of radiography is dangerous and highly stressful for the daily working conditions of the veterinarian and veterinary assistant. Taking radiographs releases radioactive radiation, and it is crucial at what distance a person and/or animal is from the X-ray generator and how that person is exposed to the radiation. This chapter focuses on solutions that increase the distance for imaging professionals who are likely exposed to the harmful effects of radiation during X-ray takes. You will also find our DR-product package for protection and easy positioning, we believe we have the most appropriate solution for today's equine veterinarian. In any case, we cannot imagine a practice without it! In total, we cover more than 50 brands of screens on the market.



NEW!



DR-Quadro

The DR-Quadro is a handheld, lightweight, portable X-ray flat panel protection frame that secures and protects your device from outside influences. The rubber straps provides extra protection and a soft edge in case of impact. The DR-Quadro has a smart locking system that allows you to attach additional screen protection, grids or backscatter lead to your panel in no time. The DR-Quadro comes standard with a mountable telescopic grip, to get extra distance and a mountable and height adjustable Support foot.



Find your FPD brand



Includes:

- Protection frame
- Handgrip - a mounted grip handle for easy carrying
- Distance stick
- Support foot

Material:

- Anodized aluminum frame with rubber sides

Options:

- Protection screen
- Carbon protection plate
- Back scatter lead - see page 39
- Anti scatter grid - see page 39

Customise your DR-Quadro

- Choose your frame colour
- Choose a handgrip colour



Choose your frame colour



Choose your handgrip



Find your FPD brand!

DR-Protectionbox

- Light-weight protectionbox - Handheld
- Depending on your DR-system, the box comes with a mounted grip handle or with our Greppstr 2.1 (see page 31).



Find your FPD brand!

DR-Podo-Protectionbox

Protectionbox with 0.2" adapters to place in our Podoblock and Combibox, that guarantees the same direction and angle with hoof examinations at all times. Depending on your DR system, the box comes with a mounted grip handle or with our Greppstr 2.1 (see page 31).



Find your FPD brand!

DR-Pouch

A radiolucent pouch that protects your fragile and expensive X-ray panel from outside influences during handling!

Our DR-Pouch is available from stock in all ISO measurements and other sizes & models are on request available.

It comes with:

- Synthetic leather on the outside with marked detection area
- One long side and one short side are made of transparent material to get access to switches and view LED's
- Thermo-plastic strap handle covered with rubber grip for comfort carrying
- Fast and convenient zipper closure on one long side for ease access

Grab-and-Go



Transparent Sides



Find your FPD brand!

DR-Buckybox

The DR-Buckybox is an affordable alternative version of our X-ray cassette protection case, similar to our DR-Cowboybox.

The DR-Buckybox is ideally compatible with the Denfinity, Bucky Lite and Stat-X Bucky Stand.

- Available from stock for all current DR Flat Panels
- Perfect fitting box and secured with locking door
- The Polycarbonate box comes with the Greppstr 2.1 universal handgrip (for wireless Flat panels) for easy carrying



Find your FPD brand!

DR-Cowboybox

Protectionbox, Podo-protectionbox and Remote cassette holder all-in-one.

Standard with mountable telescopic grip, which rotates in 3D positions to get extra distance and a mountable and height-adjustable 300 mm Support Foot.

For enhanced distancing from the x-ray source and thus the radiation exposure, the DR-Cowboybox is ideally compatible with the Denfinity, Bucky Lite and Stat-X Bucky Stand.

Depending on your DR system, the box comes with a mounted grip handle or with our Greppstr 2.1.



Find your FPD brand!

DR-Cowboy Package

The optimal combined package of DR Products to make all X-rays needed, both safely and in a standardized fashion.

The package deal includes:

- Podoblock
- DR-Cowboybox
- DR-Combibox LM / AP
- Combibox Dummy LM



SCAN ME

Prices | and info

Each product has its own QR code. Scan the code with your mobile's phone camera and always get up-to-date prices and information.



Find your FPD brand

DR-Combibox LM / AP

The Skyline side of the DR-Combibox has the same features as the original DR-Skylinebox. Because of the unique angle, the horse is standing comfortably, and there is more space for the X-ray generator. When turned over, the tunnel has extra features to facilitate LM flat views of the foot. The special adapters on the DR-Combibox allow you to take "hands-free" X-rays in combination with our DR Podo-Protectionbox, DR-Quadro, DR-Cowboybox or DR-Buckybox. This way, the DR-Flatpanel is protected and always in the right position. The DR-Combibox LM / AP has the option to facilitate AP flat views of the foot. This way it is not necessary to replace the foot for both exams.



Find your FPD brand

Combibox Dummy LM

The DR-Combibox Dummy LM lifts the equine foot to a higher level. The special adapter on the Dummy block allows you to take "hands-free" X-rays in combination with our DR-Podo-Protectionbox, DR-Quadro, DR-Cowboybox or DR-Buckybox.

- Size: L 9.3" x W 6.3" x H 3.5"



Find your FPD brand

DR-Combibox Set

Both standing feet on the same height is advised with LM and AP examinations. That is why our Combibox Dummy can also be supplied with the DR-Combibox.

- The Combibox Set is included:
- DR-Combibox LM / AP
 - Combibox Dummy LM



DR-Skylinebox

This product is a full protection box made of 0.8" polycarbonate material that withstands the weight of the horse's foot while in standing position during X-ray exams. Because of the particular angle, the horse is standing comfortably, and there is more space for the generator. The top surface comes with a translucent anti-slip surface. A lock secures the opening of the insert.

- Material: 0.8" polycarbonate



Find your FPD brand

Grepstr 2.1

This universal grip handle can be used on a number of our DR-products:

- DR-Protectionbox
- DR-Podo-Protectionbox
- DR-Cowboybox
- DR-Buckybox



Find your FPD brand

Distance Stick

These sticks can be used on several products for CR Cassette solutions and DR-Flat panel solutions.

Please make sure you choose the correct one.



Find your FPD brand

Support Foot

This Support Foot can be used on several products for CR Cassette solutions and DR-Flat panel solutions.

They are universal and work with the CR-Distance Cassette holder with foot option, our DR-Cowboybox and DR-Buckybox.

CR Panel Solutions

Computed radiography (CR) systems are still much in use in the veterinary world. At Podoblock we offer a complete product line in order to enable your CR system for your equine tasks. Check our complete CR product portfolio online



SCAN ME



Stat-X Bucky

With our Stat-X Bucky, you have the most advanced, all-purpose mobile stand that will fully satisfy your needs in your daily working environment.

The Bucky can be ordered with optional short legs (19.7" instead of 35.4") and extra counterweight (14.3 lbs).

For added usability and compatibility, there is a slide & lock adapter at the top of the Swingarms for connecting to the integrated 3D adjustable joint to our (optional) DR-Quadro, DR-Buckybox or DR-Cowboybox. It takes only 2 seconds!

Technical Specifications:

- Swing arm length: 29.5"
- Vertical travel arm: 27.5"
- Vertical travel stand: 16.1"
- Max height bracket: 72.8"
- Weight X-ray cassette / Panel: 8.8 - 44.1 lbs
- Transport size: L 43.3" x W 11.8" x H 12.6"
- Weight: 48.5"
- Colour: PMS260C Satin

The Stat-X Bucky is compatible with our DR-Quadro, DR-Cowboybox and the DR-Buckybox, but it comes without a Cassette or Panel holder, these can be ordered separately. See page 29.



Stat-X Swingarm Bucky

The Bucky Swingarm has a weight-bearing capacity from 8.8 up to 33.0 lbs where the 8.8 - 15.4 lbs is most convenient for all systems.

For added usability and compatibility, there is a slide & lock adapter at the Bucky Swingarm for connecting to the integrated 3D adjustable joint to our (optional) DR-Quadro, DR-Buckybox or DR-Cowboybox. See page 29



Bucky Lite

The Bucky Lite is a mobile stand for mounting one of our X-ray cassette protection boxes (DR-Quadro, DR-Buckybox or DR-Cowboybox). The stand can easily be adjusted to a suitable height for the perfect X-ray result. It is collapsible and built with light-weighted material for easy transport or carrying around. It is the perfect equipment that is efficient and practical for your daily working environment.

To set up, push down the slide bar located on the vertical tube, and the connecting base wheels will extend outwards and set into a working position. It requires no tools or skills and no loose components. The whole process takes only 5 seconds!

For added usability and compatibility, there is a slide & lock adapter at the top of the tripod for connecting to the integrated 3D adjustable joint to our (optional) DR-Quadro, DR-Buckybox or DR-Cowboybox. It takes only 2 seconds!

- Light-weighted aluminium material
- Foldable, retractable and movable tripod
- Maximum height of 3D-joint is 59.1"
- Vertical travel of the telescopic tube is 24"
- Easily transported with a weight of 10 lbs
- Folded dimensions L 37" x W 9.1" x H 9.1"
- Comes with 5 swivel wheels (2 with a locking brake)

Denfinity

This light-weight portable and collapsible stainless steel stand offers you the freedom to make high-quality Skull X-rays in a hands-free fashion.

The Denfinity stand is a fully stainless steel base plate and vertical telescopic pole that guarantees a secure positioning and right height adjustment.

Starting with the base element of the Denfinity, the base plate and pole, you can configure with several options that can quickly and directly be placed on the Denfinity base.

The aluminium 3D-joint is used in combination with our DR-Quadro, DR-Buckybox or DR-Cowboybox.

The Protectionbox secures your Cassette or Flatpanel when using in combination with the 3D-joint.





6 | Markers

Despite the digital revolution, the use of markers is still commonplace. Isn't it convenient to be able to carry on doing this in the 21st century - as if it were the analogue era? Sometimes there's just nothing wrong with being 'Old School'...

X-Ray Clip

Stainless steel clip for analogue and CR-cassettes.

- 2.16" x 0.83"
- Gap: 0.7"

Available markers:

- L / R
- LF / RF
- LV / RV
- LH / RH
- LAT / MED



X-Ray Clip DR

Multiclip that clenches around the edges of our boxes / pouches.

- 3.74" x 0.98"
- Gap: 1.06"

Available markers:

- L / R
- LF / RF
- LV / RV
- LH / RH
- LAT / MED



Multimarker

Stainless steel all-in-one marker with suction cup.

- Ø 0.2"

Available markers:

- LF / RF / LH / RH
- LV / RV / LH / RH
- LAT / MED / DV / VD



Multiclip DR

Multiclip that clenches around the edges of our boxes or pouches.

- Ø 0.2"
- Gap 1.06"

Available markers:

- LF / RF / LH / RH
- LV / RV / LH / RH
- LAT / MED / DV / VD



Sarah Marker

Marker with integrated label to always be sure about the horizontal plane.

Available markers:

- L / R with suction cup
- L / R with stainless steel clip



Buckymarker

Marker with suction cup or clip for your cassette holder to provide information about the horizontal plane.

- 360° rotation
- Size: L 1.9" x W 1.73" x H 0.16"

Available markers:

- L & R Lead Markers



Left & Right X-Ray Lead Markers

- Deluxe, lightweight plastic casing
- Increased durability and an exceptional finish
- Vertical orientation
- Right & left characters are 0.63" each
- Sold as a set of markers (left & right)
- Colour: Red & Blue



7 | Image improvement

After our early-day inventing and production of several X-ray accessories, we received a steady flow of demand for specialized and customized products to enhance and improve the quality of X-rays. All these inventions have meanwhile become mainstream in our product line and can usually be delivered from stock.



Carbon



Aluminium



SCAN FOR PRICES

Antiscatter Grid

Our anti-scatter Grid's are always produced on customer request and therefore will create the most effective device for reduction of scattered radiation. Made of very thin lead strips with the spaces between the strips that are filled with low-attenuating material.

- Grid covers can be from Aluminium (standard) or Carbon fibre (optional) material
- Grid specifications (Focused or Parallel, Focus Distance, Lines per cm, Ratio, Portrait or Landscape model and exact sizing) can be set by ordering
- Below you will find listed the most common sized Focused and Parallel Grid with Aluminium and Carbon fibre covers with their corresponding pricing
- Other specific Grid specifications don't interfere in the pricing
- Grids are always produced on request (lead times 4-6 weeks), therefore no return possible
- Easy to insert in our protectionboxes and protectionframe



SCAN FOR PRICES

Backscatter Lead

- Separate foil with sealed lead to avoid backscatter
- Fully covered lead Pb 0.15 mm
- Easy to insert behind any X-ray panel in our protectionboxes and protectionframe



SCAN FOR PRICES

Aluminium Wedge

Aluminium Wedges that filter the radiation with high purity, made from homogeneous quality aluminium for better back / neck X-rays.

- Small wedge with Velcro for use on your X-ray generator. Dimensions: 7.68" x 2.95" / 23°
- Small wedge with Velcro for use on your X-ray generator. Dimensions: 7.68" x 1.97" / 45°
- Large concave wedge by Prof. J.M. Denoix. Dimensions: 15.75" x 7.87" x 1.57" - 0"



SCAN FOR PRICES

Aiangle

A great device to measure the exact angle. It is easy to place on both your generator and Cassette Holder. We supply a digital and an analogue version.

Analogue

- Measuring range: 360°
- Velcro base

Digital

- Measuring range: 360°
- Magnetic base, tilt display
- 2 AAA batteries included



8 | Protection & Safety

Radiation protection is pivotal to all X-ray exams. It’s the alpha and the omega. Fortunately, we offer a complete range of products to protect our users against radiation optimally. With personalized sizes and colours, we have tried to make our product line suitable for all our customers. We have solutions for all environments, be they stationary at your clinic or in a mobile environment on any location.



X-Ray Apron ‘The Basic Buckle’

This Apron is our most economically priced Lead-Free apron, equipped with a Buckle and a Velcro shoulder strap to keep the apron snugly fitted during work. The accessory is Thyroid Shield included and has a convenient magnetic MAGNAGUARD™-closing instead of Velcro. This Lead-free apron is made of new material, consisting of 12 metals. It is more flexible, lighter, and has the same protection value. (Pb 0.5 mm equivalent)

Made in the USA, this apron guarantees quality and maximum protection!

- Color:** Navy Blue with a silver lining
- Material:** ULTRAFLEX™ fabric
- Sizes:** Small, Medium, Large, Extra Large
- Included:** Accessory Thyroid Shield

Size	Chest/Waist	Length	Weight (lbs)
Small	35" – 38"	35"	5.9
Medium	39" – 42"	37"	6.4
Large	43" – 46"	39"	7.2
Extra Large	47" – 50"	41"	7.6



Thyroid Shield



X-Ray Apron 'The Barrier Flex'

- Provides excellent weight distribution & comfort
- Two full adjustable Velcro straps cross in the back & attach in the front providing a comfortable fit while keeping the apron securely on the shoulders
- Adjustable elastic inserts in the rear flaps offer greater comfort, adjustment & support
- Comfortable fit during long procedures
- Shoulder pads provide additional comfort
- Thyroid protection shield integrated with magnet closing ensures maximum protection
- The Pb-free version is made of new material, consisting of a combination of 12 metals and is lead-free. It is more flexible, much lighter and has the same protection value

Made in the USA, this apron guarantees quality and maximum protection!

Colour: Navy Blue with silver lining
Material: Lightweight ULTRAFLEX™ fabric
Sizes: Small, Medium, Large, Extra Large
Weight: Min: 5.9 lbs, Max: 7.6 lbs

Size	Chest/Waist	Length	Weight (kg)
Small	35" - 38"	35"	5.9
Medium	39" - 42"	37"	6.4
Large	43" - 46"	39"	7.2
Extra Large	47" - 50"	41"	7.6



Thyroid Shield



Back



Side

X-Ray Vest & Chaps

The UltraFlex Support Lightweight Lead-Free X-ray Vest and Chaps.

Product Features

- Fluid-proof, antibacterial, stain-resistant
- Lightweight lead-free 0.5 mm Pb-equivalent front protection and 0.25 mm Pb-equivalent back protection
- Two pieces for maximum comfort and even weight distribution to reduce body fatigue
- Durable High-quality UltraFlex material
- Easy to clean with any disinfectant
- Includes attached thyroid shield

The Lead-free X-ray Vest and Chaps is an original Podoblock design and is only available through Podoblock.

Size: Chest/ Waist 40 - 49"
Length: Vest: 24.8" | Chaps: 23.6"
Weight: Vest: 7.6 lbs | Chaps: 6.6 lbs
Material: Lightweight ULTRAFLEX™ fabric
Colour: Black & Silver



Back



Side



Front



Back



SCAN ME

Prices | and info

Each product has it own QR code. Scan the code with your mobile's phone camera and always get up-to-date prices and information.



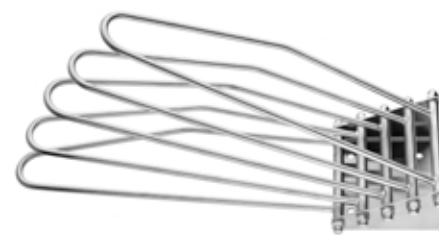
Apron Rack Hanger

- 1 garment
- Wood or Stainless Steel



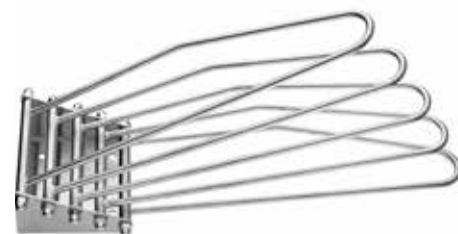
Glove Rack

- 3 pairs gloves
- Wall mount



Apron Rack Wall

- 5 garments
- Wall mount
- Left & right side folding



Storage Rack Complete

The Storage Rack is suited for:

- 6 garments
- 3 pair of gloves
- 3 sets of goggles
- Comes in parts - easy set-up
- Size: L 27.5" x W 19.7" x H 78.7"
- 4 castor wheels, 2 of which with brake pedal
- 6 hangers are included



Mittens

Mittens

- Flexible vinyl glove
- One size fits all Pb 0.5 mm



'Speedy'- Black & Orange



'Fit Over'- Black

X-Ray Protective Goggles

- Lead glasses
- Pb Front 0.75 mm
- Pb Side 0.5 mm
- Adjustable straps
- Protective case



Cross Base Mobile Lead Shield

This fully collapsible Lead Shield with adjustable radiation barrier protects against secondary or scatter radiation. Easy to transport and use in any location.

- Shield size W 24" x H 35"
- Pb value 0.5 mm
- Light-weighted aluminium material
- Collapsible & Height Adjustable (no tools required)
- The maximum height of the bracket for the lead shield is 175 cm
- Vertical travel of the telescopic tube is 33"
- Easily transported with a weight of 18.5 lbs
- Folded dimensions 37" x 9" x 9"
- It comes with 5 swivel wheels (2 with a locking brake)

New!



SCAN FOR PRICES



Warning Sign

Mobile warning sign that radiation is being released.

Available languages:

- English
- German
- Dutch
- Danish
- French

Other languages on request



SCAN FOR PRICES

Barrier Tape

Hazard warning tape is designed as a cautionary marking tape for use in areas where radiation is being released.

- Two-sided print
- Easy tear-off
- Width: 3"
- 820 ft per roll



SCAN FOR PRICES

Scinti Solutions

These standard blocks are made to elevate the horse's foot to the desired height in 2 stages, single or stacked.

The blocks are made without any metal parts, in order to avoid interference with Scintigraphy and comes with 3M anti-slip cover.

Get 2 sets of blocks (4 in total) on which to position the horse. Stacking the blocks allows for a second, higher position of the horse.

The 2 available Covers come in 2 different sizes.

- 1 block measures 2.95" in height
- 2 layered blocks measure 5.71"

The SET includes:

- 2 sets of 2 blocks
- 1 small Cover, measuring L 30" x W 11" cm and Pb 1,5 mm
- 1 large Cover, measuring L 30" x W 22" cm and Pb 1,5 mm

Both Covers each have 4 corner-grips for easier use and come in grey.



SCAN FOR PRICES





9 | Transport & Storage

Having mobile efficiency is essential for every mobile veterinarian. Imagine having all your necessary tools in one simplified transport system to grab and go. At Podoblock, this is what we do. We provide efficient transport solutions to enhance your mobile efficiency. In this chapter, you will discover our lightweight, compact and transport friendly solutions for every mobile veterinarian.



SCANDroid

The ideal, height-adjustable scan stool for the mobile veterinarian to transport to the job site or for clinic use.

Note: For more information revert to page 10
H1 | Orthopedics - Ultrasound

Compare carts: QR code Scan me:
podoblockusa.com/veterinary-carts



SCAN ME

NewCart

Durable, in height adjustable cart for all small and big machines or equipment, accommodated with gas spring for variable, stageless height-adjustment and storage space in bottom reservoirs. Easy transport position with the pull-out handle, easy storage in vertical position.

- Transport size: W 16.3" x D 24.4" x H 11.8"
- Weight: 37.9 lbs
- Plateau size (inside rim): W 22.4" x D 14.6"
- Height-adjustment from 11.8" to 42"
- Maximum load: 45 lbs
- 4 swivel, lockable Ø 100 mm castor wheels

- A. Transport Position
- B. Position 1: Height 11.8"
- C-D. Stageless height adjustment: 11.8" - 42"



SCAN FOR PRICES

Product	Itemnumber
NewCart	VS 10NCART
ProbeRack	CUPH 10NCART
NewCart + ProbeRack	VS 10NCART C



OPTIONAL: ProbeRack



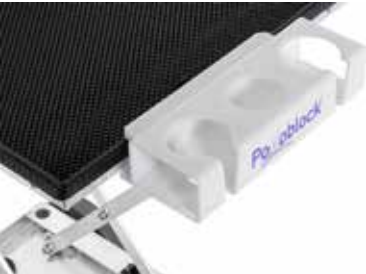
Position 1: 10"



Position 2: 22"



Position 3: 3"



The DRagster

The DRagster veterinary cart comes upgraded with larger wheels for enhanced stability and a pull-out handle for transport, thus increasing portability. The cart is built with durable aluminium material, height-adjustable and suitable for heavy machines and equipment. Three positions height adjustment, 10", 22" and 34".

- It can be stored in a vertical position to save space
- Easy transport position with the pull-out handle
- It works great as a mobile cart for small and oversized equipment
- And also for your DR-flat panel suitcase

Optional with professional ProbeRack to store in total 2 ultrasound probes and gel bottle.

- Transport: W 22" x D 17" x H 10"
- Total weight: 32 lbs
- Tray Dimensions : W 22" x D 17"
- Max. load: 77 lbs
- 2 big ø 8" wheels
- 2 locking ø 15" castors

Product	Itemnumber
DRagster	VS 10865625
ProbeRack	CUPH 10SCAN
DRagster + ProbeRack	VS 10865625 C



SCAN FOR PRICES



Compact Storage Position



Smooth & Efficient Transport



Optional: ProbeRack

SCANster

This veterinary trolley is the optimal ultrasound solution for creating the ideal working height at all times. Especially designed for the portable ultrasound. Optional ProbeRack can be ordered to store a total of 2 ultrasound probes and a gel bottle.

- Material: Light-weight durable aluminium
- Transport size: W 23" x D 16" x H 10"
- Weight: 29 lbs
- Plateau size: W 21.6" x D 14.8"
- Maximum load: 33 lbs
- 4 locking Ø 3" castor wheels

Product	Itemnumber
SCANster	VS 1045321910
ProbeRack	CUPH 10SCAN
SCANster + ProbeRack	VS 1045321910 C



Possible Positions



- Position 1:** 10" for imaging the foot and pastern
Position 2: 17" for imaging the forelimbs and hind limb
Position 3: 30" for imaging the stifle, shoulder and elbow
Position 4: 44" for imaging the hip, sacrum, back, neck and endo-rectal images



Mobile WorkStation

The Mobile WorkStation is a sophisticated, compact, comfortable and flexible construction that creates optimal mobile working space for every mobile professional. The WorkStation is entirely customizable and upgradeable with StorageBoxes and Upgrade units to create a system that can be easily transported, assembled and disassembled by one person and quickly loaded into a vehicle.

- Colour: Black/Light Grey
- Material: ABS, Aluminium
- Dimensions: W 25.2" x D 24"x H 35"
- Weight: 30 kg
- Upgrades: 13

Features

- Completely customizable
- Numerous upgrades possibilities
- Compact and solid

Benefits

- Build the system you need to get the job done
- Lightweight for easy transport
- One person assembles and disassembles



Build your own Mobile WorkStation in 4 steps



Base element

1

Start with a Base element

2

Choose your upgrades - listed on page 55

3

Choose your StorageBoxes and Drawers - listed on page 56

4

Order your mobile workstation or request a demo

Would you like to see a demonstration to check out the possibilities of the Mobile WorkStation? You are always welcome to visit our workplace in Florida (USA), we can give an online demonstration or we can look for a possibility to give a demonstration on location. Just make an appointment by contacting us.



2

Upgrades



1 - Workspace Increase

- Plateau size W 38.2" x D 17.5"



SCAN FOR PRICES



5 - Power Storage

- 33 feet cable
- 5x EU 230V socket
- UPS back-up



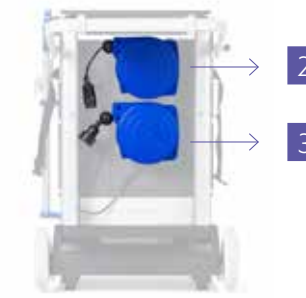
8 - SCANDroid Transport Support

- Magnetic Hook



11 - 4 tube positions

- L 400 mm
- 2x Ø2.2" & 2x Ø1.6"



2 - Power Supply

- 23 feet extension
- 1x EU 230V plug



3 - Power Extension

- 23 feet extra reach
- 1x EU 230V socket

For the non-European users, we provide professional adapter plugs



6 - Power Station

- 3680W
- 1x EU 230V socket
- 1x USB-C



9 - 4 Positions Hook board

- Separate Needle container



12 - Garbage bin

- Separate Needle container
- Tork paper dispenser



4 - Power Expansion

- 33 feet cable
- 5x EU 230V socket



7 - Telescopic Equipment Support

- incl. 2 Carabiner Snap Hooks



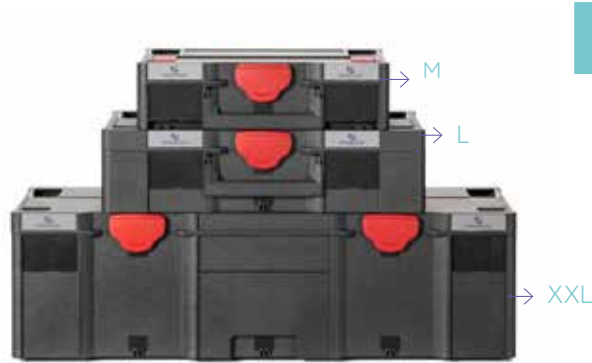
10 - Garbage bin

- Separate Needle container



13 - Transport profile

- L 39.4"
- Used with Upgrade 10, 11 & 12



3 Mobile WorkStation StorageBox

The StorageBoxes are designed to securely stack onto each other with a twist&Lock knob that creates a perfect, uniformed and organised storage system - which can be placed directly onto your Mobile Workstation and easily into a veterinary car.

In addition, stacking possibilities are unlimited and create maximum mobility and organisation in a stationary or mobile job site.



Twist&Lock knob

- The boxes are designed to securely stack on top of each other with a Twist&Lock knob. The WorkStation's Base element also has a Twist&Lock knob for securing boxes. The stacking possibilities are unlimited.
- You can stack up the StorageBoxes and Drawers to 68 cm high on the Mobile WorkStation. Need more boxes for your equipment? No worries, you can easily change boxes on the Mobile WorkStation. Another option is to take extra boxes to the mobile workplace on a Transport Base Element (page 57). For safe transportation, a Stationary Base Element is available which secures the StorageBoxes in the car (page 57).



Padding included



Two handgrip options



Toolbox

- incl. 5 storage bins in compartment
- Material: ABS Plastic



Drawers

- Material: ABS Plastic



Product	Dimension outside		Dimension Interior
Single Drawer 270	W15.6" x D11.7" x H10.6"	Drawer: H2.7"	W15.3" x D10.8" x H10.6"
Single Drawer 315	W15.6" x D11.7" x H12.4"	Drawer: H2.7"	W15.3" x D10.8" x H12.4"
Triple Drawer	W15.6" x D11.7" x H12.4"	Drawer: W15.3" x D10.8" x H2.7"	



SCAN FOR PRICES



SCAN FOR PRICES

Storagebox Medium

- Padding included
- Material: ABS Plastic

Product	Dimension outside	Dimension Interior
Medium 105	W15.6" x D11.7" x H4.3"	W15.3" x D10.8" x H2.8"
Medium 130	W15.6" x D11.7" x H5.12"	W15.3" x D10.8" x H3.8"
Medium 180	W15.6" x D11.7" x H7.09"	W15.3" x D10.8" x H5.7"
Medium 230	W15.6" x D11.7" x H9.06"	W15.3" x D10.8" x H7.7"
Medium 330	W15.6" x D11.7" x H13"	W15.3" x D10.8" x H11.7"
Medium 430	W15.6" x D11.7" x H16.93"	W15.3" x D10.8" x H15.5"



Storagebox Large

- Padding included
- Material: ABS Plastic

Product	Dimension outside	Dimension Interior
Large 130	W20" x D11.7" x H5.12"	W19.7" x D10.8" x H3.8"
Large 180	W20" x D11.7" x H7.09"	W19.7" x D10.8" x H5.7"
Large 230	W20" x D11.7" x H9.06"	W19.7" x D10.8" x H7.7"



Storagebox XXLarge

- Padding included
- Material: ABS Plastic

Product	Dimension outside	Dimension Interior
XXLarge 230	W31.2" x D11.7" x H9.06"	W30.9" x D10.8" x H7.7"
XXLarge 330	W31.2" x D11.7" x H13"	W30.9" x D10.8" x H11.7"



Transport

Transport extra boxes to the mobile workplace on a Transport Base Element. For safe transportation the Stationary Base Element is available which secures the StorageBoxes in the car.



Transport base element




Stationary base element




10 | Farriery


Changing a horseshoe is ideally done by a farrier. But when you, as an equine veterinarian choose to do so, we have several professional and ingenious tools for you lined out in this chapter.


Apron
VET



SET




SCAN FOR PRICES


SCAN FOR PRICES

VET Tools

A comprehensive set of tools to get you going, quickly and safely.

VET Tools Set includes:

- Apron "VET"
- Soft-faced Hammer
- Clinch Cutter
- Straight Blade
- Loop Knife
- Nail Puller
- Pull-off
- Adjustable Hooftester
- Canvas Storage Bag

Product	Itemnumber
Apron "VET"	VV 10VET
VET Tools Set	VV 10SET






SCAN FOR PRICES


SCAN FOR PRICES

Adjustable Hooftester

Easy-to-use, adjustable hooftester.

- Stainless Steel

Hooftester

- Easy to use and durable stainless steel equine hoof tester

Product	Itemnumber
Adjustable Hooftester	VV 10WERK07
Hooftester	VV 10WERK08






SCAN FOR PRICES

123 Shoeing Kit

Use this indispensable high-quality farrier-hammer with the clinch cutter for removing 'hidden' nails during de-shoeing.

- Shoe Puller
- Hammer
- Clinch Cutter

Product	Itemnumber
123 Shoeing Kit	PZT 10123SK

Podoblock:

- Makes work easier
- Excellent service
- Safe and ergonomic working
- Global delivery
- Excellent quality products
- Customization
- Easily transportable products



Re-imagine the way you work

8204 SW Lost River Road, Stuart, FL 34997 U.S.A.

info@podoblockusa.com | 001 561 815 22 65

podoblockusa.com